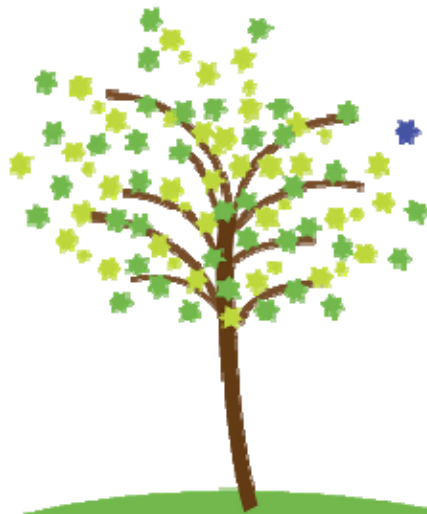


Welcome!

Some important information from our
School, Parents Committee and
Washington Hebrew Congregation



Washington Hebrew Congregation
Early Childhood Centers & Primary School



Welcome to our School!

We are so happy to welcome your family to our school. We hope this year will be one of growth, happiness and wonder for your child. To help you prepare your child for a successful beginning of school, we have put together a packet of information that will help answer many of your questions.

On the following pages you will find:

Things to Know, which includes:

- School hours
- How we share information with you
- Information about age-specific optional programs
- Tuition payment schedule
- School calendar
- And much more!

“Welcome” Information, from

- The Parents Committee
- Washington Hebrew Congregation

Back to School Forms (www.whcecc.org)

All students need to have a completed set of medical and school forms on file with our school. We have two different form packages on our website, depending on the program your child participated in last school year or during the summer. Please read carefully to determine which package your child needs. If you have any questions, please contact our office.

COMPLETE PACKAGE - including emergency contact and medical forms

- For any child who was enrolled in our T2's, 2's, 3's or 4's programs during 2010-2011 (last school year). Your medical and emergency forms need to be updated every school year. ***This option covers most of our students.***
- For any child who is a ***new RJWECC (T2, 2, 3 or 4) or Kindergarten student*** for 2011-2012 ***and*** who ***did not attend Camp Keetov/In the Beginning.***

BASIC PACKAGE - no emergency contact or medical forms

- For any child who is a ***new RJWECC or Kindergarten student and also attended Camp Keetov/In the Beginning this summer,*** we have a basic set of forms which needs to be updated each year. Prior to the start of camp, you submitted emergency contact and medical forms. Unless there has been a change in your child's emergency contact information, medical condition or needs, what you provided in June will cover your child through the school year. If you need to update anything already on file, please download our "Complete Package."



Key things to know about Our School



Who are we?

The Rabbi Joseph Weinberg Early Childhood Center (RJWECC) and WHC Primary School are Jewish schools for children ages 18 months—6 years of age, affiliated with Washington Hebrew Congregation in northwest Washington, DC.

Where are we?

We are located at 11810 Falls Road in Potomac, Maryland. Our phone number is 301-279-7505. Our fax number is 301-354-3200. We are on the web at www.whcecc.org

Who can answer your questions?

Your child's teachers will be the primary source of information for you. When you need to connect with someone in our office, however, here are the best ways to reach us:

Phyllis Shankman, Director of Early Childhood Education

301-279-7505
pshankman@whctemple.org

Fran Miller, Director of the RJWECC

301-279-7505
fmiller@whctemple.org

Bea Langel, Registrar

301-354-3205
blangel@whctemple.org

Sherill Glickman, School Nurse

301-354-3278
sglickman@whctemple.org

Helaine Groeger, Administrative Staff (ACE Club)

301-354-3203
hgroeger@whctemple.org

Donna Levin, Administrative Staff (Enrichment Program, 2's Lunch Bunch)

301-354-3206
dlevin@whctemple.org

Jen Millstone, Administrative Staff (Parent Communications and Website)

301-354-3226
jmillstone@whctemple.org

Lindsay Masciana, Receptionist

301-279-7505
lmasciana@whctemple.org

Additional information follows on the next page!

More key things to know about Our School

How will we contact you?

School-wide Email and Weekly e-Newsletters

Most of our school-wide communication with parents is via email and comes from Jen Millstone. On the *Child Emergency Contact Information Form* we ask you to provide email addresses where we can reach you. To ensure you receive our notices and information, please add jmillstone@whctemple.org to your address books.

Each Wednesday during the school year, we will email a newsletter to you. It is filled with important, up-to-the-minute information and links. The newsletter will most likely address on-going questions you may have regarding schedules, school happenings, individual program sign-ups, etc.

Individual and Emergency Contacts:

Sometimes, we also need to reach you individually, so please be sure to provide up-to-date contact information including mobile and work telephone numbers on your *Child Emergency Contact Information Form*. If any of your contact information changes throughout the year, please be sure to let our School Office know.

If we need to close school unexpectedly, either before or during the school day, we will send out an email to all families. To assist us in this process we use the "School's Out" service. Prior to the start of school, please visit www.schoolsout.com/view/school/353 and register your email addresses (no charge) or mobile phone numbers (a minimal charge) for text messages so we can reach you quickly in an emergency. Additionally, if our school does close unexpectedly during the school day, we will make every attempt to contact each family by phone.

Additional information follows on the next page!

Key things to know about The Transitional 2's



A special time for children (and parents) to meet your teachers:

You and your child will be invited to come in for a personal “Meet Your Teachers” appointment on **Tuesday, September 6**. You will receive a postcard from your teachers letting you know the date and time of this meeting. If you have not received your postcard by Monday, August 22, please contact our school office.

When you come for your “Meet Your Teachers” appointment, please bring with you:

- A current picture of your child
- A copy of your child's birth certificate (if not already on file with the school)
- A check for \$45, made payable to WHC to cover your child's activity fee for the school year
- Diapers and wipes
- A box of tissues
- A complete change of seasonally-appropriate clothes (including socks and if possible, a spare pair of shoes) in a labeled zip-lock bag which we will keep in the classroom
- **Your “Back-to-School” paperwork and forms.**

Special hours for the beginning of the year:

Our Transitional Twos (T2's) class is a wonderful first step into preschool for your child and you. As you know, you and/or your spouse or caregiver will attend the program with your child through the end of December.

To ensure a smooth transition for your child, we have designed a special schedule for the beginning of school that gradually increases your child's time in the classroom. Please note the hours for the first two weeks of school:

- Tuesday, September 6: “Welcome to School” conferences
(You will be notified of your child's time via postcard)
- Thursday, September 8: Entire class: 9:30 - 10:30 am
- Tuesday, September 13: Entire class 9:30 - 11:00 am
- Thursday, September 15: Regular schedule begins
(entire class meets from 9:30 - 11:00 am)

Regular school hours:

- September - December: Tuesday and Thursday from 9:30 - 11:00 am
(child attends with parent or caregiver)
- January - June: Tuesday and Thursday from 9:30 - 11:30 am
(child attends independently)

Please label everything your child brings to school, including backpack, clothes, outerwear and shoes!



Fee and Payment Schedule 2011 – 2012

Rabbi Joseph Weinberg ECC

WHC Primary School

Program	Tuition		Tuition Deposit Paid with Application*	Additional Advance Tuition Payments	Total Tuition Deposits	Balance** (billed July 1, 2011)		Payments of remaining balance		Must be paid by:
	Member	Non-Member				Member	Non-Member	Member	Non-Member	
Transitional Twos	\$2,225	\$2,585	\$300	\$500	\$800	\$1425	\$1785	\$855 \$570	\$1071 \$714	July 30, 2011 Nov. 30, 2011
3-Day	\$4,150	\$4,825	\$300	\$500	\$800	\$3350	\$4025	\$2010 \$1340	\$2415 \$1610	July 30, 2011 Nov. 30, 2011
5-Day	\$5,635	\$6,555	\$300	\$500	\$800	\$4835	\$5755	\$2901 \$1934	\$3453 \$2302	July 30, 2011 Nov. 30, 2011
Kindergarten	\$12,575	\$14,625	\$500	\$2500	\$3000	\$9575	\$11625	\$5745 \$3830	\$6975 \$4650	July 30, 2011 Nov. 30, 2011

*In addition to this deposit, a \$75 ECC application fee or a \$100 Kindergarten application fee was paid at time of registration. This amount was not applied towards tuition. Each registered **family** will also be charged a security fee: **\$175** (WHC members) or **\$245** (non-members).

**With advance deposits having been paid.

Tuition is based on a 9 1/2 month school year (September through mid-June). If more than one child in the same family is registered, there is a five percent reduction in the tuition for each additional child. This reduction will be reflected on your initial tuition bill from the Temple accounting office.

Enrichment fees (for 3's and 4's) are **\$388** per day per semester for WHC members and **\$426** per day per semester for non-members, based on a two-semester year.

All Temple and ECC financial obligations must be current before your child may enter school this coming school year. To keep your account current, please make your payments according to this fee and payment schedule. Until your account is paid in full, you will continue to receive a monthly bill from the Temple. If you have any questions, please contact the school office at 301-279-7505.

Rabbi Joseph Weinberg Early Childhood Center
Washington Hebrew Congregation Primary School



Hello Parents,

We hope that you and your families are enjoying your summer, and are looking forward to the 2011-2012 school year. The Parents Committee is planning a lot of wonderful activities and events for the coming school year, and we hope you will join us for the fun.

For those of you new to our school, the Parents Committee is an organized body of parent volunteers who work with our teachers and staff to raise funds to support our school in many ways. Some of the ways we use these funds include:

- funding new playground equipment – including a brand new playground for the 2s,
- sponsoring staff development – including on-site workshops and offsite conferences, and
- providing scholarships for families in need.

Being involved with the Parents Committee is a wonderful way to meet new friends. It is also a great way to feel a part of the RJWECC/WHCPS community.

Parents Committee meetings are held the first Friday of each month throughout the school year. Our first meeting this year will be **Friday September, 9 at 9:30 am** at JBSC. We hope you will stop by to hear about our exciting plans for the upcoming year and all the ways – big and small – you can get involved. You are welcome to bring your younger children, and we will provide breakfast and coffee!

We will kickoff our school year with a few fun and very successful fundraisers:

- **Great Harvest Bakery challah delivery program** – information about this is included in your back-to-school form packages. To tempt your taste buds, we will provide samples during the “Welcome to School” conferences on August 31 and September 1.
- **Carmen’s Italian Ices** – the Carmen’s cart will be outside our school at dismissal on Friday September 9. It will be a great time to enjoy a treat with your kids and to get reacquainted with friends after summer.
- **Book Fair, Picture Art and Make a Plate** – More information to come on these exciting fundraisers!

We are looking forward to an exciting year with you!

Robyn Minkoff and Hannah White
Parents Committee Co-Chairs

Julia Bindeman Surburban Center
11810 Falls Road, Potomac, Maryland 20854
301-279-7505 • whcecc.org



A Message from the WHC Membership Committee

To our "Young" and Non-member ECC Families:

We are so pleased that you have chosen to send your children to one of our Early Childhood Centers! We know it will be a magical year, filled with fun and learning. For those of you who are not currently members of Washington Hebrew Congregation, we also want to welcome you to our WHC community. We are thrilled to have you in our wider WHC family and want to do everything we can to make you feel at home here.

We hope that in the months and years to come you will consider becoming Fair Share members of WHC and wanted to give you a few facts about membership. While the ECCs at both the Julia Bindeman Suburban Center and Macomb Street and Primary School at JBSC are truly the "shining stars" of WHC -- to borrow an ECC class name -- the Early Childhood program is only the beginning of what WHC has to offer.

I know, personally, what all WHC has to offer. As a young couple, my husband and I joined the Temple and have grown with each lifecycle step we've taken. We have celebrated Brit and baby namings with the Rabbis, sent our three children through the ECC program and religious school, attended joyous holiday and Shabbat services, and participated in Temple's many community service programs. WHC is truly a warm and welcoming spiritual home and community for our family, and we are confident it could be the same for yours.

As a practical matter, membership may be a sensible economic choice. Temple members receive a 14% discount on tuition at both ECC programs. For example, members save more than \$1,500 in tuition on the full-day 4s program at Macomb and more than \$600 on the 3-day program at JBSC. Enrichment fees are also lower for members and priority registration is given to members for the most popular programs.

As you may know, WHC's standard membership is based on a Fair Share system in which members make an annual contribution to the Temple based on their total family income. Because we know that becoming a Fair Share Temple member may represent a considerable financial commitment, we have developed a program specifically designed to reduce the burden on our young ECC families. Once you identify the proper Fair Share level based on your income, you have four years in which to begin paying the full amount.

If you would like more information about membership or have any other questions, please contact me, nellshapiro@aol.com or (301) 652-7529, or WHC Membership Services Manager Lindsay Fry, lfry@whctemple.org (202) 895-6321. A representative from WHC's Membership will also be at the "Meet Your Teacher" appointments at both ECC locations in September and will be happy to answer your questions then.

Again, welcome to ECC and Washington Hebrew Congregation. We look forward to a wonderful year growing and learning with your family.

Warmly,

Nell

Nell Shapiro
WHC Board Member and Secretary

Celebrate the High Holidays with Washington Hebrew Congregation



Welcome to our WHC family! We hope our non-Temple member ECC families will consider getting to know us a little better and join us at Temple for preschool or family services on Rosh Hashanah and Yom Kippur.

When are our services?

- On Erev Rosh Hashanah, Wednesday, September 28, we will hold a family/preschool service at 7:00 pm
- On Rosh Hashanah day, Thursday, September 29 we will offer several options:
 - Preschool services at 9:30 am and 11:00 am
 - Family service at 2:00 pm
- On Kol Nidre, Friday, October 7, we will hold a family/preschool service at 7:00 pm
- On Yom Kippur, Saturday, October 8, our options include:
 - Preschool services at 9:30 am and 11:00 am
 - Family service at 2:00 pm

Which service might be right for your family? Below is some information to help you choose.

- Preschool services last 35 minutes and are designed for our littlest congregants and their parents. They include guitar music, singing and storytelling to teach about the High Holy Days and the importance of celebrating as a community. Our rabbis and Religious School Music Director, Audrey Katz, lead these abbreviated services.
- Family services are geared toward K-6th grade students and their families. They build on the foundation created by our preschool services, and recognizing the importance of intergenerational worship, these services encourage families to share sacred space. Using High Holy Day prayer books created specifically for elementary school-aged children and their families, services are led by our clergy, Audrey Katz, and our 5th, 6th, and 7th grade students.

We hope you will choose to join us.

Please contact Nell Shapiro, nellshapiro@aol.com with any questions and to reserve your tickets.



A program designed exclusively for non-Jewish moms raising Jewish children

The Interfaith Committee of Washington Hebrew Congregation is happy to announce that our popular *Mothers Circle* program will be repeated this fall as a three-session evening course.

The course will introduce Jewish practices and ethics in an environment that provides an opportunity to ask questions and have them answered by knowledgeable facilitators. It is a supportive atmosphere with no pressure to convert.

We completed our first Mothers Circle program last May, and it was a very rewarding and educational experience for all the participants. Here are some of their testimonials:

"The class gave me some good ideas on ways to make a more Jewish home for our family, but probably more importantly, it showed me that there are a lot of women in my community who face the same issues and complexities of raising children in a faith other than their own."

"This was a wonderful program that combined instruction on Jewish traditions with emotional support for non-Jewish mothers raising Jewish children."

"I had a wonderful time in Mothers Circle this year; in addition to getting to know everyone in class and receiving wonderful advice, it helped make participating at the Temple less intimidating."

Classes are forming for one evening a month this fall at Temple; the day of the week will be determined by participants and facilitators.

This program is open free of charge to both Temple members and non-members.

**For more information, please email Pam Bass,
whcmotherscircle@gmail.com.**

The Mothers Circle is sponsored by WHC Sisterhood and the Interfaith Committee and is in association with the Jewish Outreach Institute.